



EXPLORE

MOUTH

A UNIVERSITY ADVANCING
THE SCIENCE AND PRACTICE OF INTEGRATIVE CARE



MUJIH

MISSION

A distinctive community of scholars, researchers, practitioners, and advocates, Maryland University of Integrative Health promotes whole person, relationship-centered healthcare. Through discovery and exploration, we deliver progressive educational programs, advance innovative clinical models, build mutually beneficial partnerships, and provide opportunities for fulfilling careers.



TABLE OF CONTENTS

3 President's Message



5 Our History

6 Why MUIH?

VISION

Serving as a leader in the global transformation of health and wellness, we integrate healing traditions and contemporary science, acknowledge the wisdom of the body and nature as a teacher, and focus on the interconnection of mind, body, and spirit. Our work enables people to thrive through the cycles of life.



11 Graduate Academic Programs



15 Admissions Requirements and Funding Your Education

18 Career Services



19 Career Outlooks in Integrative Health



FOUNDATIONAL PRINCIPLES AND VALUES

At Maryland University of Integrative Health, we commit, individually and collectively, to remembering these foundational principles. We use these to guide our behavior, inform our decisions, and shape our preferred future.

FOUNDATIONAL PRINCIPLES

Interconnection

Everyone and everything in the universe is intrinsically connected. Modern science and ancient healing traditions both reflect our interdependence with the environment.

Healthcare research shows that individual well-being is directly connected to the health of both the social community and ecological environment. Ancient healing traditions assert that individually and collectively people shape the world in which they live through their words, actions, and thoughts.

Holism

A person, organization, or system is more than the sum of its parts and can ultimately only be understood and explained as a whole. This holistic perspective significantly impacts healthcare, research, and community life.

Working from this orientation, practitioners take into consideration the entirety of a person (body-mind-spirit); researchers apply systems approaches rather than reductionist models to the study of therapeutic disciplines; and educators, policy makers, and community members make decisions and take action within the context of the whole.

Transformation

People, communities, and organizations have the potential for profound and ongoing change. Transformation is catalyzed by the environment

and receptivity to change. The availability of resources and a sense of empowerment are central to positive transformations. Time-honored traditions assert that living in harmony with nature, cultivating mindfulness, and serving others are paths to individual and community transformation.

Diversity

Diversity underlies the health of any system. In the natural world, biological diversity generates and reflects a sustainable ecology. Diversity of people within an organization or community contributes to creativity, adaptability, and the checking of group bias. Recognition of diverse explanatory models of health and disease, the value of different healing modalities, and the uniqueness of each person provides the foundation for an inclusive and robust model of healthcare.

Resilience

Resilience is the process of navigating change and effectively recovering from challenges. It is a type of adaptation that involves maintaining core integrity while adjusting to meet the demands of shifting circumstances. At its best, resilience involves not only meeting a challenge but also evolving and thriving as a result of the process. Physiological resilience reflects the capacity to maintain and adjust biological states, as needed. From a whole-person perspective, resilience emerges from a multitude of factors, including accepting circumstances that cannot be changed; taking decisive actions when required; cultivating a healthy, positive perspective; developing a sense of purpose in life; and establishing strong social support.

VALUES

Community

We operate from an acknowledgment and declaration of interconnection. Our strength and success derives from each of us individually and collectively taking responsibility for the whole.

Mindfulness

We are intentional and thoughtful in our interactions and in our choices. We listen deeply to one another, choose our words with care, and take actions that serve each other and the common good.

Integrity

We ground our actions and words in honesty, compassion, and dignity. We aspire to excellence and accountability in all we do.

Inquisitiveness

We are committed to lifelong learning. We examine our positions and assumptions to discover new perspectives and ways of being. We strive to be open, to receive coaching, and to respond effectively to feedback.

Discernment

We make decisions with reference to our past, present, and future. We honor and learn from the elders, align with our principles and values, and consider the impact of our choices on future generations.

YOU ARE WELCOME HERE

We are so happy you have decided to explore Maryland University of Integrative Health (MUIH). Whether you are considering becoming a student or a patient, want to join our faculty, be a part of our staff, or have an idea for a partnership, we sincerely welcome your inquiry and look forward to learning more about you.

Here at MUIH our commitments are to educate, heal, support, and collaborate. You can count on us to consistently deliver on these promises. We care for patients and clients in our campus Natural Care Center where we offer integrative health treatment and consultations. Our practitioners include licensed and certified professionals, as well as supervised student interns.

Being a “healing presence” is an element that is essential to everything we do. We take our values-driven philosophy seriously, and our foundational principles are front-and-center in everything we do. We strongly believe in the power of relationships to heal. Our students are assessed on their ability to develop this healing presence, which includes elements of empathy, self-reflection, and mindfulness. We also strive to use this healing presence in meetings with our partners, and in interactions with our community. We respect the role of allopathic medicine and prepare our students to work side-by-side with healthcare providers from all disciplines.

We believe in the power of community as a fundamental part of the MUIH campus and virtual experience. Just as a patient and practitioner form a mutually rewarding relationship on the path toward healing, our faculty and students learn from each other and develop lasting bonds that support a sense of interconnection and unity.

If you’re ready to be a part of the movement toward wellness and an advocate or practitioner of whole-person, relationship-centered healing, MUIH might be what you’ve been looking for.

We are on a fulfilling, meaningful, and exciting adventure to shift the landscape of healthcare and your contributions are most welcome.



Dr. Steven Combs
President





WHAT IS INTEGRATIVE HEALTH?

Integrative health, sometimes referred to as integrative medicine, is a practice that focuses on the whole person, making use of all appropriate therapeutic approaches, healthcare professionals, and disciplines to achieve optimal health and healing.

Other terms you may have heard: Complementary; Alternative; Traditional

What about the science? The body of research literature about integrative health practices has grown significantly in recent years, particularly on acupuncture, yoga, nutrition, and mindfulness practices.

HISTORY

**WE COULDN'T
IMAGINE THEN WHAT
WE WOULD BECOME.**

Over the years, we have secured and reinforced our position as a national leader and change agent in the world of integrative health.



HERE'S A LOOK AT A FEW OF OUR MILESTONES:

1974: Institution cofounders Bob Duggan and Dianne Connelly incorporate the College of Chinese Acupuncture, U.S. in the state of Maryland. It is the outgrowth of a program begun in Kenilworth, England, in which U.S. students studied acupuncture with Dr. J. R. Worsley.

1985: TAI is the first school accredited by the National Accreditation Commission for Schools and Colleges of Acupuncture and Oriental Medicine (NACSCAOM, now known as ACAOM).

2002: Tai Sophia Institute moves to a new 12-acre campus in Laurel, MD. The campus opens with a 32,500-square-foot building in a beautiful natural setting.

2006: The Middle States Commission on Higher Education grants initial accreditation to Tai Sophia Institute.

2015: MUIH receives approval by the Maryland Higher Education Commission and permission from the Middle States Commission on Higher Education to offer doctoral level education.

2017: MUIH announces the School of Naturopathic Medicine, the first Naturopathic Doctor (ND) school in the mid-Atlantic region and one of only a handful of ND schools in the nation that operate within a accredited university.

1978: The College amends its charter, and the name is changed to Traditional Acupuncture Institute (TAI).

1995: TAI opens a student teaching clinic, giving clinical students in the acupuncture program a supervised space to treat patients.

2000: As the school enters a new era of service, it takes a new name, Tai Sophia Institute, which signals an expanding mission and encompasses new programs. The name links the Chinese word Tai, meaning "great," and the Greek word for "wisdom," Sophia.

2012: Tai Sophia Institute is reaccredited by the Middle States Commission on Higher Education for 10 years, after a rigorous and comprehensive review of the curriculum, faculty, governance structure, and student and institutional outcomes.

2013: The Institution officially achieves university status and changes its name to Maryland University of Integrative Health. With this landmark achievement, MUIH becomes one of a small number of accredited universities in the country exclusively committed to integrative health.

1900s

70

75

80

85

90

95

2000s

00

05

10

15

20

WHY MUIH

**THIS COULD CHANGE
YOUR LIFE...**

Congratulations on considering a career in integrative health! Choosing one of our programs could change your life—and create the opportunity for you to change countless other lives for the better.



Student Readiness for Careers

Our students are provided with the education and hands-on training to be a standout after graduation. We incorporate clinical and/or field experience into all of our programs, giving our students the edge in joining an existing organization or starting their own practice. Our curricula prepare students for professional practice and our career center offers personalized support to help students explore career opportunities and search for jobs. Employers say resoundingly that our students distinctively embody relationship-centered care and practices. We have a proven track record of graduating practitioners who move on to work in private practice or in various other health-related jobs.

Impact on lives

Our graduates are passionate about the benefits of integrative health and are changing lives around the world! As experienced practitioners and supporters of the field, they address health from a holistic perspective that empowers clients and emphasizes prevention, treating the whole person, and natural cures. Whether through creating sustainable behavior changes among individuals, or making use of a variety of therapeutic approaches, our graduates are making the difference in creating healthier and happier communities.

Our Programs

MUIH stands as a leader in integrative health education. We focus solely on integrative health, which provides students with deep expertise and an immersion in the field. We offer doctoral degrees, Master's degrees, and graduate certificates in a wide range of wellness fields, as well as individual academic courses for professional and personal development. Our progressive educational programs are built on curricula that are based on scientific research and grounded in relationship-centered whole-person philosophy.





STUDENT LIFE AT MUIH ON-CAMPUS AND ONLINE

Maryland University of Integrative Health's 12-acre campus in Laurel, Maryland, houses the MUIH Graduate School, Sherman Cohn Library, Meeting Point Bookstore and Cafe, Himmelfarb Gallery, Herb Garden, Herbal Dispensary, and Natural Care Center.

The campus is surrounded by thousands of acres of preserved natural woodlands that surround the Middle Patuxent River and lead to the Middle Patuxent Environmental Area—positioning students in the midst of Maryland's natural beauty and in the heart of one of the greatest concentrations of health-related corporations, regulatory agencies, academic institutions, and research laboratories in the world.

MUIH offers flexible schedules and formats for several of their academic programs, meeting the needs of today's busy and diverse student body. Many of the programs can be completed in as few as one to two years or as many as five. Evening and weekend courses are available, and many programs may be completed on-campus, online or through a combination of in-person and online courses (hybrid format).

Our Faculty

Our faculty members are practitioners themselves and passionate about integrative health. As experts in the field, our highly qualified faculty integrate real world practice and experience into teaching and learning, and serve as professional mentors for students through on-on-one relationships. Our Natural Care Center, includes a student teaching clinic that gives students the opportunity to practice in their field under the guidance of our faculty.

Our Process

Our admissions staff treat prospective students the way we treat our patients—with compassion and care designed to customize the experience. We offer a simplified admissions process allowing for rapid admission decisions. Students do not need prior education or experience in the field to explore their passion for integrative health. Pre-requisite coursework is built into the program. No GRE requirements. Nearly half of our students (47%) take advantage of the financial aid offered.

START TODAY!
Visit us at www.MUIH.edu



With a background in the sciences and a reverence for the ancient traditions of the world, MUIH's approach of integrating ancient wisdom with modern science was exactly what I was looking for.

ROHAN JASANI

Clinical Herbalism, Therapeutic Herbalism, and Health and Wellness Coaching

WHY MOUTH

HANDS-ON
TRAINING...




NATURAL CARE CENTER
at Maryland University of Integrative Health

Naturopathic Medicine

Acupuncture

Chinese Herbs

Nutrition

Yoga Therapy

The Natural Care Center at Maryland University of Integrative Health, which includes our student teaching clinic and professional practitioners, has provided powerful, meaningful, and effective healing experiences for patients and clients with a wide array of health challenges.

The Natural Care Center at MUIH houses the University's Teaching Clinic, offering students the opportunity to gain critical, hands-on experience in a clinical setting. With our team care model, MUIH graduate student interns learn how to deliver highly effective and compassionate health services under the guidance of experienced faculty supervisors who are licensed or certified professionals.

WHAT WE BELIEVE

Whether you are considering an online or on-campus program, the integrity and credibility of MUIH will quickly become one of the clear advantages of your choice. As leaders in the field of integrative health for more than 40 years, we are uniquely positioned to prepare highly qualified practitioners for the future.

We take seriously our guiding principles and values and you'll experience this whenever you engage with us. We are committed to high standards of practice and an equitable, seamless admission process. As you explore your options with us, here's what you can expect:

Professionalism – Highly skilled, well-prepared counselors are ready to work with you.

Responsiveness – We'll respond to your inquiries and requests in a timely and compassionate manner.

Accessibility – You'll have access to the people and materials you need to make the best decisions.

Respect for Individuality – You'll be valued as an individual with unique knowledge, skills, preferences, and needs.

Relationship-centered, whole-person approach – It's not just what we teach in our healing courses, it applies to all of our work, including the admissions process.

Integrity – You can count on us to listen carefully and help you find the best fit for you.



Every time I work in the Natural Care Center, I learn something new from my partners, supervisors, and clients about acupuncture, Chinese medicine, and the simple wisdom of living in harmony with both our inner nature and what's occurring outside of us in our external environments.

LIANA BROOKS-RUBIN
Acupuncture

GRADUATE ACADEMIC PROGRAMS

MUIH offers degrees and certificates in a wide range of wellness fields, as well as individual academic courses for professional and personal development.



I have made lifelong connections with some of the most wonderful people ever to walk this planet—my classmates. Not only am I lucky to have them as colleagues, we have also become a tight-knit family. And I have MUIH to thank for that.

JOANNA BALZ
*Nutrition and
Integrative Health*

MUIH offers Master's and Doctoral degrees and graduate certificates in a wide range of wellness fields, as well as individual academic courses for professional and personal development.

MUIH's programs consist of specialized study and practice in particular fields, and are grounded in a core curriculum woven throughout each program:

Scientific principles in anatomy, physiology, biochemistry, and behavioral and environmental health that underlie each discipline.

Research literacy and the use of evidence to think critically and inform decision making and practice.

Healing presence as an integral part of interpersonal relationships and interactions.

Inter-professional provides the skills needed to work with professionals in other fields and work in settings as varied as private practice, community wellness initiatives, and medical and hospital settings.

Practice management skills necessary to build a practice or enter the work force and participate in today's growing healthcare field.

Programs are offered online, on-campus, and in hybrid formats, and feature digitally-enhanced and interactive learning experiences.

Acupuncture and Oriental Medicine

MUIH was the first accredited acupuncture school in the nation and, nearly 40 years later, is still recognized as a pioneer and leader in the field. The Acupuncture and Oriental Medicine program emphasizes self-cultivation and “healership” – offering students a rigorous, transformative, and relationship-centered curriculum that acknowledges the complex interrelationship between body, mind, and spirit.

- **Doctor of Acupuncture**
- **Doctor of Oriental Medicine**
- **Master of Acupuncture**
- **Master of Oriental Medicine**
- **Post-Baccalaureate Certificate in Chinese Herbs**

Health and Wellness Coaching

MUIH is among the pioneers setting industry standards for this rapidly growing career field. The program prepares students to work one-on-one with individuals in identifying and meeting their goals. Unique to MUIH’s health and wellness coaching philosophy is an integrative approach to wellness and healing, a focus on whole-person care, and a model that emphasizes prevention.

- **Master of Arts in Health and Wellness Coaching**
- **Post-Baccalaureate Certificate in Health and Wellness Coaching**

Health Promotion

The Health Promotion program at MUIH prepares students to work with groups and organizations to help address the needs and challenges of the nation’s healthcare trends. This program offers students a comprehensive foundation in health sciences and integrative health, including an evidence-based understanding of the physiological, behavioral, and environmental aspects of disease prevention and healthy living. The program provides pathways for focused study in community education and workplace wellness.

- **Master of Science in Health Promotion**

Herbal Medicine

MUIH offers the only Master’s degree in therapeutic herbalism from a regionally-accredited university. It offers students a comprehensive study of medicinal herbs and their role in physiology, health, and wellness, and integrates modern scientific and research knowledge with traditional wisdom. The program provides pathways for focused study in clinical herbalism or herbal product design, and opportunities to study in the field and in MUIH’s on-site dispensary.

- **Master of Science in Therapeutic Herbalism**
- **Post-Baccalaureate Certificate in Herbal Studies**

Naturopathic Medicine

The School of Naturopathic Medicine at MUIH is the first and only in the mid-Atlantic region and one of only a handful of naturopathic medical schools in the nation that operate within a regionally accredited university. It offers students progressive models for evidence-informed medical education, hands-on and virtual laboratories, and a wide variety of clinical experiences including community-based healthcare. Learning is designed to foster critical clinical reasoning through a curriculum that establishes a foundation in biomedical sciences, naturopathic philosophy, and integrative therapeutics and includes emerging trends in genomics, bioinformatics, and personalized medicine. The Doctor of Naturopathic Medicine program prepares graduates to practice as first-contact providers with expertise in botanical medicine, clinical nutrition, homeopathy, counseling and coaching, and manual therapies designed to address the whole person.

- **Doctor of Naturopathic Medicine**

Nutrition and Integrative Health

The Nutrition and Integrative Health program at MUIH prepares students with the advanced skills and expertise to fill a growing demand for leaders in a field known to be one of the most influential determinants of long-term health and wellness. The program emphasizes the vital and interrelated physiological, environmental, socio-cultural, and spiritual roles of food. The program includes emerging trends in nutrigenomics, the microbiome, and sports nutrition among others. Graduates of this program will be uniquely positioned to fill the growing demand for nutritionists and nutrition educators.

- **Doctor of Clinical Nutrition**
- **Master of Science in Nutrition and Integrative Health**
- **Post-Master's Certificate in Nutrition and Integrative Health**

Yoga Therapy

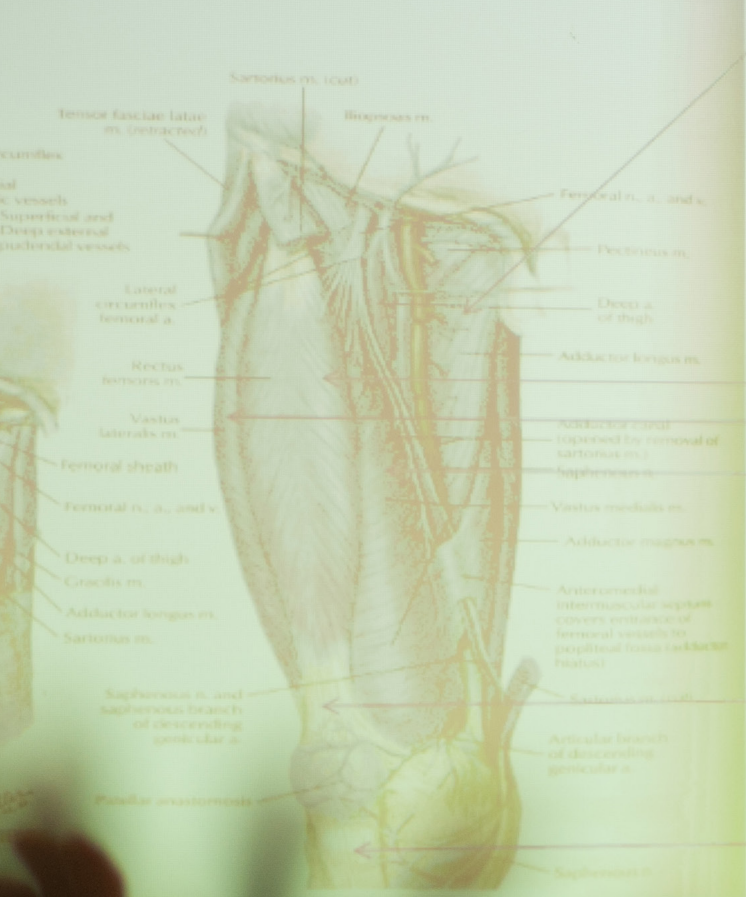
MUIH's Master of Science in Yoga Therapy is among the nation's first graduate degrees in this rapidly growing field. Designed specifically for serious yoga enthusiasts and yoga teachers, this program will prepare students to fill the growing demand for advanced practitioners with the skills and expertise to empower people toward better health and wellness. The program provides students with the extensive foundational knowledge in yoga therapy, research literacy skills, and experience working in a variety of medical and wellness settings needed to excel in a future career.

- **Master of Science in Yoga Therapy**

EXPLORE THE POSSIBILITIES!

Visit us at www.MUIH.edu





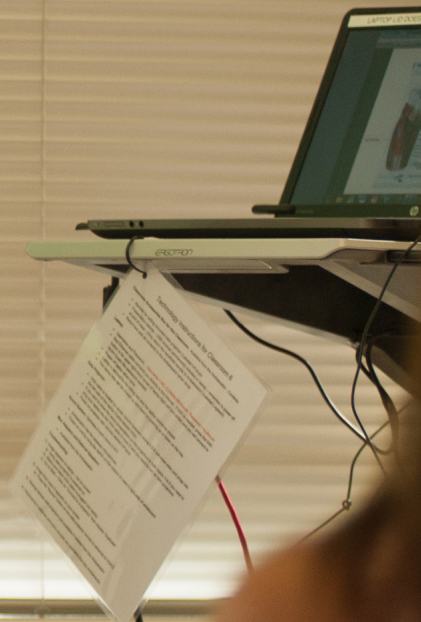
Adductor longus

↓
Quadriceps femoris

↓
Rectus femoris
Vastus lateralis
Vastus medialis
Vastus intermedius

↓
Quadriceps tendon

↓
Patellar tendon/lig.



ADMISSIONS

Whether you wish to attend an on-campus open house, an online information session, or a personalized tour, our admissions team is available to support your exploration of graduate programs at MUIH.

Our admissions team is available to support your exploration of graduate programs at Maryland University of Integrative Health. The Graduate Admissions Office offers information sessions by appointment, Monday through Friday between 10:00 a.m. and 4:00 p.m. Please contact Admissions to schedule a time to speak over the phone or visit the campus to have your questions answered. You may reach us by calling (410) 888-9048 ext. 6647 or emailing admissions@muih.edu.

ADMISSION REQUIREMENTS

To be considered for admission to all graduate academic programs, including academic certificate programs, master's degrees, and doctoral programs, applicants must have a bachelor's degree from a regionally accredited institution. No standardized test scores are required for admission.

If your bachelor's degree was not completed at a college or university accredited by a regional accrediting body recognized by the U.S. Department of Education, copies of the institution's academic catalog may be required and course syllabi may be requested. If your bachelor's degree was completed at a college or university outside of the United States, a third-party course-by-course academic evaluation is required.

Some programs have additional requirements. See our Academic Catalog or contact the Graduate Admissions Office for more details.

INTERNATIONAL STUDENTS

An applicant that has earned any degree outside of the United States must submit an official evaluation from an approved foreign credential evaluation service confirming the foreign degree(s) U.S. equivalency. Students must order this evaluation independently, and it must be received in a sealed envelope. Any current member of the National Association of Credential Evaluation Services (www.naces.org) or the Association of International Credential Evaluators (www.aice-eval.org) can be used for the official evaluation of foreign degrees. MUIH will accept official degree evaluations from the American Association of Collegiate Registrars and Admissions Officers (www.aacrao.org) that occurred prior to September 2016.

FUNDING YOUR EDUCATION

A graduate degree is one of the best investments you can make in yourself. It will always provide career opportunities for you throughout the health industry. Our goal is to make our degree programs as affordable as possible based on your need.

TUITION AND FEES

MUIH sets application fees and tuition rates annually for the academic year, and tuition varies by program. See the Academic Catalog, or contact the Office of Graduate Admissions for information on tuition and fees for specific programs.

FINANCIAL AID

The Office of Financial Aid is committed to helping current and prospective students with the financial aid process. Our approach is individualized and responsive to each student's specific needs. For any questions about financial assistance, please contact our Office of Financial Aid at (410) 888-9048 ext. 6628 or at financialaid@muih.edu.

To apply for federal financial aid, students should first complete the Free Application for Federal Student Aid (FAFSA) online at www.fafsa.ed.gov. The Maryland University of Integrative Health school code to use when completing the FAFSA is G25784. To complete the FAFSA Entrance Counseling, Master Promissory Note, and/or Exit Interview, students should go to www.studentloans.gov. If you would like to receive a

financial aid shopping sheet please email financialaid@muih.edu.

TYPES OF FINANCIAL AID AVAILABLE AT MUIH

Students who have completed the FAFSA are considered for these types of financial aid offered by MUIH:

- Loans
- Scholarships and Fellowships
- Veterans Benefits

Satisfactory Academic Progress

Students who receive financial aid must not only demonstrate financial need, but must also make satisfactory progress toward the completion of their programs of study as determined by MUIH in accordance with federal regulations.

Return to Title IV Policy

MUIH follows Maryland state refund guidelines and the federal policy for return of Title IV funds.

Financial Aid Checklist

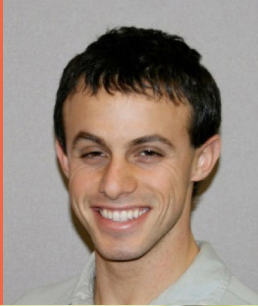
Students who would like to receive financial aid must

complete their financial aid checklist. To receive the checklist, please contact our Office of Financial Aid at (410) 888-9048 ext. 6628 or at financialaid@muih.edu.

LOANS

Maryland University of Integrative Health (MUIH) participates in the William D. Ford Direct Loan Program. This program offers loans that are funded by the federal government, guaranteed by guarantors, and reinsured by the federal government. The Federal Direct Stafford Unsubsidized Loan and the Federal Direct Graduate PLUS Loan are offered through this program to MUIH students attending at least half-time and seeking a master's degree, post-baccalaureate certificate, or post-master's certificate.

Alternative loans are available to students who need additional assistance with their educational expenses or do not qualify for Stafford Loan funds. With an alternative loan, a student can receive up to the cost of attendance, less other financial aid. A list of lenders is available from the Office of Financial Aid. MUIH does not use a Preferred Lender List. Students have the right and responsibility to select the lender of their choice. For more information on student loans, including loan requirements, and student rights and responsibilities,



To be able to assist others one-on-one and find what works for them and makes them feel well is an amazing feeling. Coupling that with the ability to delve into the science makes for an amazing left and right brain experience.

JOSHUA NACHMAN
Nutrition and Integrative Health



I was drawn to MUIH because of its innovative degree programs. Having worked in the health field, I value higher education and the caliber of learning that it can deliver.

DORCIA TUCKER
Therapeutic Herbalism and Yoga Therapy

please contact our Office of Financial Aid or visit muih.edu/admissions/financial-aid.

SCHOLARSHIPS AND FELLOWSHIPS

Eligible students who are interested in applying for an MUIH-sponsored scholarship must submit an online scholarship application and essay. A single application essay of no more than two pages may be used to apply for any number of institutional scholarships for which a student feels they are eligible. Only one essay per eligible student will be reviewed. The application will be reviewed and must be qualified by the Director of Financial Aid before it is sent to the Scholarship Review and Selection Committee for consideration.

Eligibility

To be considered for a scholarship, students must be enrolled in six or more credits for the trimester in which the scholarship is sought. Individual scholarships may have additional eligibility requirements and criteria. Please review the requirements and criteria carefully before submitted your application form.

For a list of MUIH-sponsored scholarships and their requirements and criteria, please visit www.muih.edu/admissions/financial-aid/institutional-scholarships.

MUIH Alumni Scholars Program

Prospective students referred by an MUIH alumnus are eligible to participate in the Alumni Scholars Program. Master's and Doctoral students who are enrolled at a full-time level as defined by the program plan of study are awarded \$1500 annually (\$500 per term) until graduation, and certificate students are eligible for up to \$750 annually (\$250 per term) until graduation. Only prospective students who are referred by an MUIH alumnus and meet the program guidelines are eligible to participate. Call 410-888-9048 ext. 6647 to speak with an Admissions Counselor and learn more about the Alumni Scholars Program.

Maryland State Scholarships

Maryland State Scholarships are available to individuals who have been Maryland residents for a minimum of one year. To apply, students should complete the Free Application for Federal Student Aid (FAFSA) before March 1 of each year and apply for the scholarship www.mdcaps.mhec.state.md.us. Recipients will be notified by the Maryland Higher Education Commission.

Outside Scholarships

Outside scholarships are financial aid funds awarded through outside agencies to assist students with their educational expenses. The Office of Financial Aid recommends using the following resources to research available outside scholarships.

- scholarships.com
- finaid.org/scholarships
- petersons.com
- fastweb.com

VETERANS BENEFITS

Veterans and eligible family members of veterans enrolled in academic (degree-seeking) programs at MUIH are eligible to receive VA benefits. Veterans should visit the US Department of Veterans Affairs website or contact the US Department of Veterans Affairs at 1-888-442-4551 (1-888-GI-Bill-1) and speak with a Veterans Benefits Counselor. After consulting with a Veterans Benefits Counselor through the US Department of Veterans Affairs, you can complete the 22-1990 VONAPP application for benefits online at www.gibill.va.gov.

CAREERS

**YOUR FUTURE AWAITS...
START TODAY!**



Advance with MUIH, the leader in integrative health.



CAREER SERVICES CENTER AND OCCUPATIONAL OUTLOOKS FOR MUIH STUDENTS

THE CAREER CENTER AT MUIH

The MUIH Career Center serves as a liaison between the campus community and employers, while also providing students and alumni with career counseling and job search counseling. The center also works closely with the academic programs to support external clinical, internship, and practicum placements.

The staff at the Career Services Center takes a holistic approach to teaching students and alumni how to effectively conduct their job searches. It also provides emotional support and encouragement through the stressful yet exciting process of launching or relaunching a career in the healthcare industry.

A GROWING FIELD

**\$30
BILLION**

AVERAGE ANNUAL SPENDING ON INTEGRATIVE HEALTH SERVICES

With more people seeking out alternative modes of treatment, there is a fast-growing need to educate and train more integrative healthcare professionals.

CAREER OUTLOOKS

The U.S. Bureau of Labor and Statistics project that the healthcare sector is projected to grow 18% from 2016 to 2026, much faster than the average for all occupations, adding about 2.3 million new jobs... more jobs than any other group of occupations. Within this sector, the field of integrative health is a \$30 billion industry and growing rapidly.



I love that MUIH focuses on integrative healing and relationship-centered, whole-person healthcare. I believe that this is what may be missing from our current healthcare system, and to be a part of a place looking to make real changes in today's culture is so exciting for me.

**KATELYN
CHIARELLO**
Health Promotion

CAREER OUTLOOKS IN INTEGRATIVE HEALTH

The U.S. Bureau of Labor Statistics calculates that the healthcare sector will grow by 18% from 2016 to 2026. An estimated 59 million persons aged four years and over had at least one expenditure for some type of complementary health approach, resulting in total out-of-pocket expenditures of \$30.2 billion per year. Out-of-pocket spending for complementary health services represented 9.2% of all out-of-pocket spending on healthcare.

WHERE ARE MUIH ALUMNI EMPLOYED?

Alumni apply the skills and knowledge learned in their MUIH program while employed in private practice, as well as in a variety of healthcare-related settings.

SAMPLE LIST OF MUIH ALUMNI EMPLOYMENT SITES

- Baltimore City Men's and Women's Detention Centers, MD
- Casey Health Institute, MD
- Cincinnati Children's Hospital and Medical Center, OH
- Fairfax County Department of Health, VA
- Federal Emergency Management Administration, DC
- Geisinger Health System, PA
- Georgetown University, VA Center for Health and Wellness, DC
- GIANT Foods, MD
- Holistic Veterinary Healing, MD
- Holland America Cruise Lines, NV
- Johns Hopkins University and Hospital, MD
- Kaiser Permanente, MD
- Kennedy Krieger Institute, MD
- LifeFitness, IL
- Medstar Harbor Hospital, MD
- MOM's Organic Market, MD
- National Council of Urban Indian Health, DC
- Onondaga Physical Therapy, NY
- Richmond Natural Medicine, VA
- Soliant Health, GA
- Stanford University School of Medicine and Lucile Packard Children's Hospital, CA
- Thomas Cuisine Management, ID
- Trenton Public School District, NJ
- United States Department of Agriculture, Child and Adult Care Food Program, DC
- University of Pennsylvania Medical Center, Hillman Cancer Center, PA
- Wellspan Health, PA

ACCREDITATION

INSTITUTIONAL ACCREDITATION – MIDDLE STATES COMMISSION ON HIGHER EDUCATION

Our university is accredited by the Middle States Commission on Higher Education, 3624 Market Street, Philadelphia, PA 19104 (267-284-5000). The Middle States Commission on Higher Education is an institutional accrediting agency recognized by the U.S. Secretary of Education and the Council for Higher Education.

The Middle States Commission on Higher Education (MSCHE) accredits colleges and universities in the Mid-Atlantic region of the United States. In higher education, regional accreditation is considered the most prestigious accreditation a university can achieve. The Middle States Commission is a voluntary, non-governmental, membership association that is dedicated to quality assurance and improvement through accreditation via peer evaluation. Middle States accreditation instills public confidence in institutional mission, goals, performance, and resources through its rigorous accreditation standards and their enforcement. MSCHE reviews and accredits the entire institution, not individual academic programs.

STATE APPROVAL – MARYLAND HIGHER EDUCATION COMMISSION

Each time MUIH launches a new doctoral, master's degree, or academic certificate program, it undergoes

a rigorous review process by the Maryland Higher Education Commission. Every one of our academic programs has been approved by the Maryland Higher Education Commission. Maryland Higher Education Commission's address: 6 N Liberty St, Baltimore, MD 21201 (410-767-3300).

PROGRAMMATIC ACCREDITATION

Programmatic accreditation oversees specific academic programs in the fields that fall under their purview.

Accreditation Commission for Acupuncture and Oriental Medicine (ACAOM)

The Master of Acupuncture and Master of Oriental Medicine programs at Maryland University of Integrative Health are accredited under master's degree standards by the Accreditation Commission for Acupuncture and Oriental Medicine (ACAOM), the recognized accrediting agency for programs preparing acupuncture and Oriental medicine practitioners.

ACAOM is located at 8941 Aztec Drive, Eden Prairie, Minnesota 55347; phone (952) 212-2434; fax (952) 657-7068.

The Doctor of Acupuncture and Doctor of Oriental Medicine programs at Maryland University of Integrative Health are not accredited or pre-accredited (candidacy) by the Accreditation Commission for Acupuncture and Oriental Medicine (ACAOM).

Graduates of these programs are not considered to have graduated from an ACAOM accredited or candidate program and may not rely on ACAOM accreditation or candidacy for professional licensure or other purposes.

International Association of Yoga Therapists (IAYT)

Our Master of Science in Yoga Therapy is accredited by the Accreditation Committee of the International Association of Yoga Therapists. This accreditation has been developed by IAYT to recognize organizations that achieve their rigorous and comprehensive standards for yoga therapy educational programs. International Association of Yoga Therapists' address: PO Box 251563, Little Rock, AR 72225 (928-541-0004).

International Consortium for Health and Wellness Coaching (ICHWC)

The Health and Wellness Coaching program is an Approved Transition Program by the International Consortium for Health and Wellness Coaching, qualifying students to sit for the national certification exam.

International Coach Federation (ICF)

The Health and Wellness Coaching on-campus and hybrid programs are approved by the International Coach Federation (ICF) as a 60-hour Approved Coach Specific Training (ACSTH) program.



MUIH is not only a fantastic academic setting, but a beacon for integrative health and a place of engaging community.

JASON BOSLEY-SMITH
Nutrition and Integrative Health





7750 Montpelier Road, Laurel, Maryland 20723
admissions@muih.edu | 410.888.9048 ext. 6647 | 410.888.9004 Fax

 MUIHealth  @ MUIHealth

muih.edu #exploreMUIH

